

Piping Instructions - All Sizes (I, II, III, & IV)

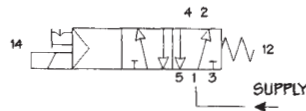
CAUTION: Air supply should be removed before modification.

Normal Piping Procedure

Use these connections if you have one supply pressure only.

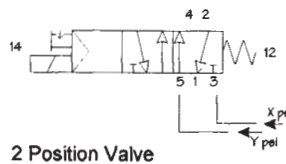
Single Pressure

Port	Marking
1	Supply Pressure
2 & 4	Delivery (Cylinder)
3 & 5	Exhaust
12 & 14	External Pilot Supply

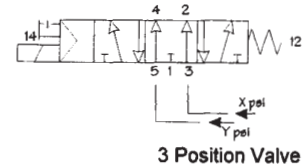


Dual Pressure Piping Procedure

2 Position Valve Piping. (Do not use unless you must use 2 different supply pressures.)



Port	Marking
1	Common Exhaust Port
2 & 4	Delivery (Cylinder) Ports
3 & 5	Supply Pressures
12 & 14	External Pilot Supply



3 Position Valve Piping. (Use for supplied center or for 2 different supply pressures.)

Dual Pressure Valve Conversion Instructions (Size I & II)

Please note that the supply pressure in Port 5 must be at least 29 psi (for 2-position models) or 44 psi (for 3-position models). If minimum pressure is not met on port 5, external piloting must be used; see page 2.31 for directions.

Size I & II CERAM Valves are designed for dual pressure applications. For this service, "replumb" the subbase by using ports "3" and "5" for the two different supplies, and port "1" for a common exhaust. (Ports "2" and "4" are still the delivery ports.) Port "3" will supply port "2", and port "5" will supply port "4". After the subbase has been "replumbed", remove the valve from the subbase and remove the bottom gasket as shown in Figures 1 and 2. Flip the gasket end-to-end so the internal pilot hole will be covered by the gasket as shown in Figure 3. Remove tab "B" as shown in Figure 3. Remount valve to base.

SIZE I GT SERIES VALVE DUAL PRESSURE CONVERSION

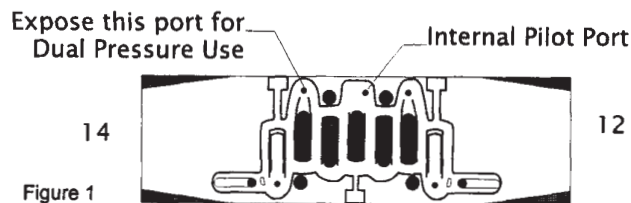


Figure 1

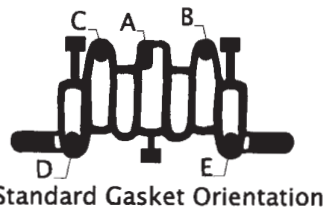


Figure 2

Standard Gasket Orientation

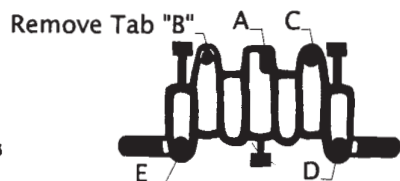


Figure 3

Reversed for Dual Pressure Conversion

SIZE II GS SERIES VALVE DUAL PRESSURE CONVERSION

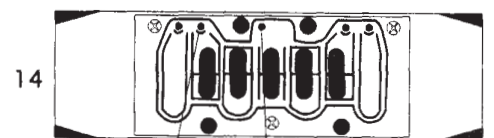


Figure 1

Expose this port for Dual Pressure Use



Figure 2

Standard Gasket Orientation

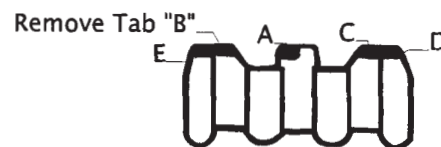


Figure 3

Reversed for Dual Pressure Conversion

Dual Pressure Valve Conversion Instructions (Size III & IV)

Convert to external pilot according to instructions on page 2.32, then follow instructions at top right of this page.